



CCTV & IP SYSTEM PRODUCT GUIDE

2009



NEW PRODUCTS

Indoor Vandal Resistant 10x PTZ Dome



PT110N

Featuring fast & silent motion with vector drive technology, optimum accuracy with micro-stepping motor control and zoom-proportional pan/tilt speed. 100x zoom control (optical 10x, digital 10x) and true day/night capabilities.

Page 8

Hi-Res Color 20" LCD Monitor



ZM-L20A-HR

This 20" hi-res color monitor features an active matrix TFT-LCD panel. The truly flat LCD screen delivers razor sharp 1600 x 1200 pixel images. The commercial grade cabinet features LCD protective glass and a tilt back stand.

Page 10

Megapixel/Hybrid NVR Server



ZNR Series

The Ganz ZNR Series NVR is an IP Video Surveillance System that integrates with all Ganz IP and Megapixel Cameras in a single 4U rackmount server. Designed for use with Ganz ZNS Series surveillance software.

Page 11

Day/Night Progressive Scan IP Dome



ZN-D9000 Series

The ZN-D9000 Series day/night IP domes feature 3.3-12 **computar**® varifocal lenses, PoE compatibility, an SD card slot & 12/24 power input. Super low-light digital or true day/night mode.

Page 12

Dual-Codec Outdoor D/N IP Dome



DDK-1500D

The DDK-1500D IP dome features a 3.7-12mm varifocal lens Providing 530 TVL with Sony Super HAD CCD. This vandal proof, IP66 rated dome features day/night function, IR illumination & Dual-codec compression.

Page 12

Megapixel D/N H.264 IP Camera



MP-DN Series

The MP-DN 1.3-5 megapixel series uses H.264 technology, offering compression rates up to 25x greater than conventional megapixel cameras and delivering HD resolution up to 25x greater than analog cameras.

Page 13

iPak Preassembled Outdoor IP Kits



iPak

iPak Kits include housing, wall or ceiling bracket with pre-assembled GANZ® camera and **computar**® lens. iPak kits can be ordered with a variety of cameras and lens combinations. Prewired power & Ethernet cables included.

Page 19

2.8-12mm Megapixel IR Lens



TG4Z2813FCS-MPIR

This 2.8-12mm F1.3 DC auto iris, megapixel IR compatible lens is recommended for 1.3 megapixel sensors. Aspherical optics provide excellent low light sensitivity.

Page 21



CONTENTS

2	CS Mount Cameras
4	Speciality & IR Cameras
6	Dome Cameras
8	PTZ Dome Cameras
9	Board Cameras
10	Monitors
11	Network Video Devices
15	Recording Devices
18	Accessories & Kits
21	Lenses

CS Mount
Cameras

Speciality & IR
Cameras

Dome
Cameras

PTZ Dome
Cameras

Board
Cameras

Monitors

Network Video
Devices

Recording
Devices

Accessories
& Kits

Lenses

CS MOUNT CAMERAS

Standard and High Resolution Color Cameras

CS Mount
CamerasSpecialty & IR
CamerasDome
CamerasPTZ Dome
CamerasBoard
Cameras

Monitors

Network Video
DevicesRecording
DevicesAccessories
& Kits

Lenses

YCH-03A

540 TVL Super Hi-Res Color Digital Day/Night Camera



An incredible value in high-performance, hi-res color, digital Day/Night video cameras. The YCH-03A offers a stunning 540 lines of resolution at 0.4 lux in Day/Night mode. An advanced backlight compensation feature, digital signal processing and Sony® CCD assure excellent color reproduction.

Model	YCH-03A
Resolution	540 TVL
Sensitivity	0.4 lux @ F1.2/30 IRE
	Digital Day/Night
Power	24VAC/12VDC auto sensing
Dimensions	2.4"W x 1.8"H x 3.7"D

ZC-NH258N

540 TVL Super Hi-Res Color True Day/Night Camera



Hi-Res color True Day/Night performance w/IR cut filter retraction at night provides color images during the day and high sensitivity B/W images at night. Fast 1.5 second Day/Night switching, digital signal processing and Sony® CCD assure excellent color reproduction.

Model	ZC-NH258N
Resolution	540 TVL
Sensitivity	0.04 lux @ F1.2/30 IRE
	True Day/Night
Power	24VAC/12VDC auto sensing UL listed
Dimensions	2.4"W x 1.8"H x 3.7"D

ZC-NH405N

540 TVL Super Hi-Res Color True Day/Night Camera



Full-featured true Day/Night camera offers brilliant 540 TVL hi-res color images by day and crisp B/W images at night via mechanical removal of the IR cut filter. The unit features six selectable backlight patterns, RS-485 control, Sony® EX-View CCD, outdoor housing option.

Model	ZC-NH405N
Resolution	540 TVL
Sensitivity	0.03 lux @ F1.2/30 IRE
	True Day/Night
Power	24VAC/12VDC auto sensing
Dimensions	3"W x 2.4"H x 4.9"D

Related Products

All cameras on this page are available pre-Installed in our Pro-Pak Housing



Pro-Pak Kits include housing, wall or ceiling bracket with pre-assembled GANZ® camera and **computar**® varifocal lens. Pro-Pak kits can be ordered with a variety of B/W, Color or Day/Night cameras with manual or auto-iris varifocal lenses. All lenses are backfocused and five feet of outdoor rated power and video cable are included. Call customer service for specific lens and camera packages.

See page 18 For more details.

ZC-YHW701N

Hi-Res Color WDR* Camera



Hi-Res WDR color camera in a super-compact 2.2" design. Ideal for tackling the toughest backlighting problems. 12VDC/24VAC dual voltage, backlight compensation, DC A/I compatibility and Sony® CCD.

Model	ZC-YH701N
Resolution	480 TVL
Sensitivity	1 lux @ F1.2/50 IRE
Power	24VAC/12VDC auto sensing
Dimensions	2.1"W x 2.2"H x 2.2"D

**Wide Dynamic Range (WDR) minimizes common backlighting problems and provides balanced exposure of both bright and dark areas within the same scene.*

CL Series

Standard and Hi-Res Color 1/3" Cameras



Economy series standard or hi-res color cameras provide full-featured performance at an extremely competitive price. 12VDC/24VAC dual voltage, backlight compensation, DC or Video A/I compatibility and Sony® CCD.

Models	CL-301/CLH-401
Resolution	330/480TVL
Sensitivity	0.8/1.6 lux at F1.2/50 IRE
Power	24VAC/12VDC auto sensing
Dimensions	2.2"W x 1.6"H x 4"D
Models	CL-301 Standard Color CLH-401 Hi-Res Color

YC-02C

Standard Color 1/3" Camera



Standard res, full-featured color camera offering patented backlight compensation with "high-light slicing," DC or Video Auto Iris lens compatibility, easy back focus adjustment wheel and 12VDC/24VAC auto sensing dual voltage input.

Model	YC-02C
Resolution	330 TVL
Sensitivity	0.6/1.2 lux at F1.2/50 IRE
Power	24VAC/12VDC auto sensing
Dimensions	2.4"W x 1.8"H x 3.8"D

FC Series

Standard and Hi-Res B/W 1/3" Cameras



Standard and hi-res, full-featured B/W cameras offer patented backlight compensation with "high-light slicing". DC or Video Auto iris lens compatibility, easy back focus adjustment wheel and 12VDC/ 24VAC auto sensing dual voltage input, and Sony® CCD.

Models	FC-62D/FCH-62
Resolution	380/570 TVL
Sensitivity	0.09/0.18 lux @ F1.2/50 IRE
Power	24VAC/12VDC auto sensing
Dimensions	2.3"W x 1.8"H x 3.8"D
Models:	FC-62D Standard B/W FCH-62 Hi-res B/W

CS Mount
Cameras

Specialty & IR
Cameras

Dome
Cameras

PTZ Dome
Cameras

Board
Cameras

Monitors

Network Video
Devices

Recording
Devices

Accessories
& Kits

Lenses



TL Series

Microbolometer Thermal Imaging Camera

A compact thermal imaging camera offering high contrast, real-time thermal video at an affordable price. Using a microbolometer detector with a germanium lens, the video image is displayed from an interpolated heat signature emitted from people, vehicles, structures, electrical and mechanical components, etc.

Models: HWB-TL8 HWB-TL16	8.2mm (50° HOV standard) 16mm (25° HOV standard)
Detector	Uncooled microbolometer
Wavelength	8 ~ 14μm
Array Format (HxV)	320 x 240 pixels
Pixel Size	23.5 μm x 23.5 μm
Video Output	NTSC
Input Voltage	5 to 15VDC
Dimensions	3.8"Ø x 10.9"D



MD Series

Color CCD Mini Dome Cameras

The compact size of the MD Series mini domes makes them ideal for discreet installation and allows for a wide range of surveillance applications. Both feature a 3.6mm lens, F2.0 with built in auto electronic shutter. The MDC-N36S provides 330 lines of resolution, while the MDCH-N36S delivers 480 lines of super-high resolution.

Models	MDC-N36S/MDCH-N36S
Resolution	330/480 TVL
Sensitivity	1.6/3.0 lux @ F2.0
Power	12VDC
Dimensions	3.7" Ø x 2.8"H



LVC-C310HM

Hi-Res Color True Day/Night Camera w/ 27X AF Zoom

An all-purpose camera for OEM inspection or surveillance applications. Camera offers a full range of features including 27X optical and 10X digital zoom, mechanical day/night feature, manual or auto focus mode, S-Video output, on-screen display, and remote zoom and focus control with DC voltage.

Model	LVC-310HM
Resolution	480 TVL
Sensitivity	1.0 lux @ F1.6 day mode 0.1 lux @ F1.6 night mode
Power	12VDC
Dimensions	2.3"W x 2.5"H x 3.9"D



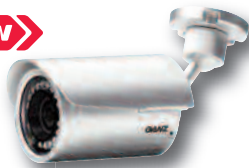
SpotCam Series

Hi-Res Color Camera w/Integrated Varifocal

A discreet, stylish housing combined with a new 2.8-10mm extended range varifocal makes this color camera/lens combination the perfect general purpose camera with high resolution performance. Camera is shown with optional mounting bracket. NVT transmitter is also available.

Models	ZC-L12110NHA ZC-L12110NHAK	Color Camera Color Camera w/bracket
Resolution	480 TVL	
Sensitivity	1.5 lux @ F1.2	
Power	24VAC/12VDC auto sensing	
Dimensions	2.2"W x 2.4"H x 4.8"D	

NEW



ZC-BT4312NHA



ZC-BNX4312NHA with external zoom & focus adjustment

IR Varifocal Series

Outdoor Day/Night IR Cameras

These outdoor day/night IR cameras feature a stylish all weather outdoor housing for installations requiring discreet appearance and outdoor performance. Featuring a 3.3-12mm **computar**® IR coated varifocal lens, hi-res color with 16 IR LEDs provide up to 50' of illumination. Light activated photocell. BNX Model includes external zoom and focus adjustment for easy set up.

Models	ZC-BT4312NHA ZC-BNX4312NHA
Resolution	540 TVL
Sensitivity	0.1 lux @ F1.4 0.00 lux (IR on)
Power	24VAC/12VDC auto sensing
Dimensions	3.5"W x 3"H x 4.9"D

CS Mount
Cameras

Speciality & IR
Cameras

Dome
Cameras

PTZ Dome
Cameras

Board
Cameras

Monitors

Network Video
Devices

Recording
Devices

Accessories
& Kits

Lenses

NEW



ZC-DT2312NHA-IR

Outdoor Vandal Proof Day/Night IR Dome

This vandal proof outdoor day/night IR dome features an IP 66 rating for all weather performance. Featuring a 3.3-12mm **computar**® IR coated varifocal lens and a single model for surface or flush mounting. 18 IR LEDs provide up to 50' of illumination. Light activated photocell.

Model	ZC-DT2312NHA-IR
Resolution	480 TVL
Sensitivity	0.1 lux @ F1.4 0.00 lux (IR on)
Power	24VAC/12VDC auto sensing
Dimensions	4.7"Ø x 4.3"D

BC-IR3.6

Day/Night Outdoor IR Camera

A stylish all weather outdoor housing for installations requiring discreet appearance and outdoor performance. Hi-res 350 TVL color with 12 IR LEDs provide up to 50' of illumination. Light activated photocell.

Model	BC-IR3.6
Resolution	350 TVL
Sensitivity	1.0 lux at F1.2 0.00 lux (IR on)
Power	12VDC
Dimensions	2.5"W x 2.3"H x 4.1"D



IR Illuminators

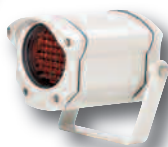
Outdoor IR LED Illuminators

The IR-LT30 provides 850nm semi-covert illumination and 28 LEDs providing up to 70' range with 30° beam angle. The IRL-86 and IRL-83 are available in 60° or 30° beam angles for medium-distance infrared illumination. 24VAC power input with photo cell. Perfect for 24-hour surveillance combined with our Pro-Pak day/night kits (see page 18).

Models	nm/beam	Range
IR-LT30	850nm, 30° beam	70'
IRL-86	850nm, 60° beam	100'
IRL-83	850nm, 30° beam	120'



IR-LT30: 2.4" x 3.3"



IRL: 3.6" x 5.9"

ZC-D5000 SERIES DOMES

Super High Resolution Day/Night Domes with Integrated Varifocal Lens



Indoor Flush & Surface Mount



ZC-OH5
Outdoor Housing



ZC5-HTR
Optional Heater

- Single Model for Surface and Flush Mount
- True Day/Night and Digital Day/Night Versions
- 540 TVL Super High Resolution
- 7 **computer**® CS Mount Varifocal Lens Options
- Optional Twisted-Pair Cat 5 Video Transmission using pre-installed NVT transmitter
- 12VDC or 24VAC Operation, Auto-Sensing
- Includes Adapter Plate for 4S Gang Box
- UL Listed
- Outdoor housing features a built-in conduit hole and ceiling and wall mount options
- Manual iris version also available

Specifications

Resolution	540 TVL	
Sensitivity	Digital Day/Night	0.63 lux@ F1.0/30 IRE
	True Day Night	0.03 lux@ F1.0/30 IRE
Power	24VAC/12VDC auto sensing	
Dimensions	Indoor	5.6" Ø x 4.3" H
	Outdoor	6.7" Ø x 5" H
Optional heater	ZC5-HTR	For operating temp to -40°

Models			Indoor		Outdoor	
Varifocal Lenses	HFOV	F Stop	Digital Day/Night	True Day/Night	Digital Day/Night	True Day/Night
2.3 - 5mm	114.8° ~ 56.1°	F1.2	ZC-D5025NHA	N/A	ZCOH5-D25NHA	N/A
2.9 - 8.2mm	98.3° ~ 35.2°	F1.0	ZC-D5029NHA	ZC-DN5029NHA	ZCOH5-D29NHA	ZCOH5-DN29NHA
2.8 - 12mm	98.2° ~ 23.8°	F1.3	ZC-D5212NHA	ZC-DN5212NHA	ZCOH5-D21NHA	ZCOH5-DN21NHA
8.5 - 40mm	33.5° ~ 7.1°	F1.3	N/A	ZC-DN5840NHA	N/A	ZCOH5-DN84NHA
5 - 50mm	51.8° ~ 5.6°	F1.3	ZC-D5550NHA	N/A	ZCOH5-D55NHA	N/A

* Add suffix "T" for NVT module. *Pre-installed NVT transmitter provides video transmission over CAT 5/Twisted pair cable. A separate receiver is required.

Indoor Mounting Options



Flush/Surface Mount
Standard



Pendant Mount
Model No. ZC5-PM1
(1" NPT Pipe)

Optional NVT Transmitter



Inside View
Shown W/Optional NVT Transmitter



Wall Mount
Model No. ZC5-WM1

Outdoor/Impact-Resistant Mounting Options



ZC-OH5
Outdoor Housing for
ZC-D5000 Series Domes



Pendant Mount
Model No. ZC5-PM2
(1" NPT Pipe)



Bottom View
With view of 3/4" conduit hole



Outdoor Wall Mount
Model No. ZC5-WM2

ZC-D4000 SERIES DOMES

Super High Resolution Day/Night Domes

Cameras



ZC-D4000 Indoor Dome



Outdoor Dome



Optional 5 foot service monitor cable for ZC-D4000 Series - Model ZCA-SM400.

The GANZ® ZC-D4000 Series domes offer full-featured performance at an economical price for indoor and outdoor installations. Both models include Digital Day/Night, True Day/Night, and Wide Dynamic Range options. Interior and exterior mounting options include flush mount, pendant mount and wall mount.

- 540 TVL Super High Resolution
- 3-9mm **computar**® F1.2 Varifocal Auto Iris Lens
- True Day/Night, Digital Day/Night, & WDR Models
- 12VDC or 24VAC Operation, auto-sensing
- Full Range of Indoor & Outdoor Mounting Options

Specifications

Resolution	540 TVL (520 for WDR models)	
Sensitivity	Digital Day/Night	1.0 lux@ F1.2/30 IRE
	True Day Night	0.08 lux@ F1.4/30 IRE
	Wide Dynamic Range	1.3 lux@ F1.2/30 IRE
Power	24VAC/12VDC auto sensing	
Dimensions	Indoor	4.7" Ø x 3.9" H
	Outdoor	5.5" Ø x 3.9" H
Lens	3-9mm F1.2 auto iris	

Models	Indoor	Outdoor
Digital Day/Night	ZC-D4039NHA	ZC-DT4039NHA
True Day/Night	ZC-DN4039NHA	ZC-DNT4039NHA
Wide Dynamic Range	ZC-DW4039NHA	ZC-DWT4039NHA

Indoor Mounting Options



Surface Mount
Standard



Flush Mount
Model No. ZC-FM2



Pendant Mount
ZC4-PM1
(3/4" NPT pipe)



Wall Mount
Model No. ZC4-WM1

Outdoor/Impact-Resistant Mounting Options



Surface Mount
Standard



Flush Mount
Standard



Pendant Mount
Model ZC4-PM2
(3/4" NPT Pipe)



Wall Mount
Model No. ZC4-WM2

CS Mount
Cameras

Specialty & IR
Cameras

Dome
Cameras

PTZ Dome
Cameras

Board
Cameras

Monitors

Network Video
Devices

Recording
Devices

Accessories
& Kits

Lenses

PTZ Dome Series

12x, 22x & 23x PTZ Domes



- 480 TVL
- Mechanical Day/Night and Wide Dynamic Range features (23X model)
- 0.01 lux low-light frame integration feature (23X model)
- 360° continuous pan rotation plus auto-flip feature
- Full range of programmable presets, patrol tours, auto pan, cruise tour, and auto home return
- Privacy zones, zone titles, scheduling, advanced alarm-handling and built-in multi protocols
- 24VAC power input (12VDC only for ZC-PT212N)

Models

ZC-PT212N	Indoor Hi-res color 12x Surface Mount Dome
ZC-PT222N	Indoor Hi-res color 22x Surface Mount Dome
ZC-PT223N	Indoor Hi-res WDR, Day/Night 23x Surface Mount Dome
ZC-PT222N-XT	Outdoor IP66 Hi-res Color 22x Dome
ZC-PT223N-XT	Outdoor IP66 Hi-res WDR, Day/Night 23x Dome

Mounting Options



Indoor Flush
Model No. ZCA-TB200 (22x, 23x)



Indoor Pendant
Model No. ZCA-PMK (22x, 23x)
Model No. ZCA-PMK1 (12x)



Indoor Wall
Model No. ZCA-WMK1 (22x, 23x)
Model No. ZCA-WMK2 (12x)



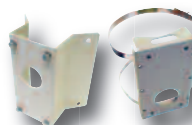
Outdoor PTZ w/Parapet
Model ZCA-PPT



Outdoor Pendant
Model No. ZCA-PMA-Q



Outdoor Wall
Model No. ZCA-GT100



Mounting Brackets
Corner Mount Adapter ZCA-CST
Pole Mount Adapter ZCA-PTDM



Controller
Model ZCA-SC201

PT110N

Fully-programmable Indoor Vandal Resistant 10x PTZ Dome

The PT110N features fast & silent motion with vector drive technology, optimum accuracy with micro-stepping motor control and zoom-proportional pan/tilt speed. 100x zoom control (optical 10x, digital 10x) and true day/night capabilities. Other functions include 128 preset positions with alpha-numeric labels, 4 mimic tour, 8 swing, & 8 patrol functions, 4 privacy zones (spherical coordinates). Compatible with 4S double gang box. Pelco P & D protocol ready.



NEW

Model	PT110N
Resolution	500 TVL color/540 TVL B/W
Sensitivity	0.7 lux color/0.02 lux B/W
Power	24VAC
Dimensions	5.8" Ø x 5.6" H

Pendant, wall and flush mount options



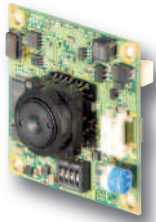
Pendant - PMK3



Wall - WMK3



Flush - FMK3



2.9mm Pinhole Lens



Standard Fixed Lens



Auto-Iris Varifocal Lens



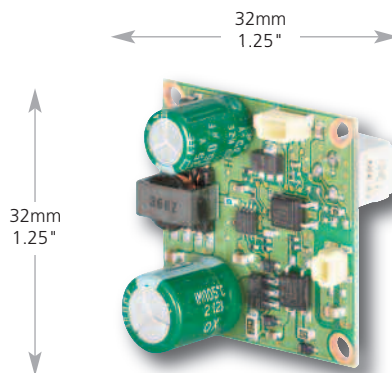
D/N Auto-Iris Varifocal Lens

CBC's line of 1/4" format 32x32mm board cameras offers maximum flexibility for OEM applications. Cameras are available in B/W or Color and Day/Night in standard or hi-res, all on a single board. Features include DC auto iris output, DSP controls for backlight compensation and gain control, DC level adjustment, and an optional 12VDC/24VAC power board. Mounting options include CS Mount, fixed lens mount, pinhole lens, and varifocal lens mount. NTSC/EIA and PAL/CCIR versions are available.

Camera Series	Camera Type	Resolution	Sensitivity (lux @ F1.2)	Shutter Speed (AES)	Voltage (VDC)
MM112	B/W	380	0.24	1/60-1/100,000	12VDC
MMH112	Hi-Res B/W	580	0.48	1/60-1/100,000	12VDC
CM112	Color	330	0.8	1/60-1/20,000	12VDC
CMH112	Hi Res Color	480	1.5	1/60-1/20,000	12VDC
DMH112	Hi-Res Color D/N	480	0.28	1/60-Fixed	12VDC

Lens Mounting Options	
Fixed Iris Lenses	1.9mm, 2.5mm, 2.9mm, 3.8mm, 6.0mm, 8.0mm, 12.0mm
Varifocal Lenses	2-4mm, 3-6mm, 4-9mm, 3-9mm, 2.8-10mm, 3-9mm D/N, 4-7.5mm D/N
Pinhole Lenses:	2.9mm
CS-Mount	Can use most fixed-iris, manual iris, or DC auto-iris monofocal/varifocal lenses. (For CS-Mount DC auto-iris lenses, use Model DCAI-112 AI cable adapter.)

Note: Not all lenses shown above are stock items. Call for availability.



Optional Power Board
PW-S24, Dual Voltage 12VDC/24VAC



Optional EM2-H Housing
(accepts both fixed and varifocal lenses)



BH-1 Housing

BH-1 Series Housing

Weather/Tamper-Resistant Housings w/Pre-Installed Cameras

Our board cameras are available preinstalled as a kit in our BH-1 Series Housing, B/W or Color options with 2.5 or 6mm fixed iris lens. All camera options include backlight compensation and auto electronic shutter for indoor or outdoor use. Wall, ceiling or corner mount with optional bracket. The BH-1 is weather-sealed aluminum housing with 3/16" polycarbonate window and tamperproof key lock. Mounting hardware and BNC connector included.



Optional Corner Mount Adapter

CS Mount
Cameras

Specialty & IR
Cameras

Dome
Cameras

PTZ Dome
Cameras

Board
Cameras

Monitors

Network Video
Devices

Recording
Devices

Accessories
& Kits

Lenses



ZM-L17/19A



ZM-L8A Side-by-side rack mount available



NEW



ZM-L20PD Series

20" Public Display Monitor System

This 20" public display monitor combines a marketing tool with a CCTV surveillance system. This LCD display has a passive IR sensor, media input, flexible software, and a hi-res color camera, all with a single-cable installation. Programmable PIR detects motion and displays customized text and multi-media images. Remote & 1GB flash card included.

Models	ZM-L20PD-H39 - 1 camera ZM-L20PD-H39X2 - 2 cam.
Panel Size	20.1" LCD
Resolution	800 x 600
Camera	480 TVL color with 3-9mm varifocal
Mounting	Telescopic ceiling mount included
Power	AC 100-240V, DC 12V/6.5A
Dimensions	18.2"W x 17.4"H x 2.8"D

ZM-L Series

Hi Res Color LCD Monitors

The ZM-L Series color LCD monitors feature active matrix screens with outstanding resolution, contrast, brightness, and VGA and composite video inputs for use with a PC or analog CCTV camera. Slim, lightweight designs with optional wall (ZM-L17A & 19A) and rack mount accessories for a wide variety of security applications.

Models	ZM-L19A 19" LCD ZM-L17A 17" LCD ZM-L8A 8" LCD
Resolution	1280 x 1024/800 x 600 (8")
Inputs	BNC video in and out, S-Video in, Left & Right audio in, D-sub (VGA) in (ZM-L17/19A only)
Power	12VDC
Dimensions	19" - 16.6"W x 16.5"H x 6.7"D 17" - 15.2"W x 15.3"H x 6.7"D 8" - 7.6"W x 6.9"H x 1.1"D

ZM-L20A-HR

Super Hi Res Color LCD Monitor

This 20" hi-res color monitor features an active matrix TFT-LCD panel. The truly flat LCD screen delivers razor sharp images. The commercial grade cabinet features LCD protective glass and a tilt back stand. Multiple input and output of Video (BNC Type), Audio, S-Video and RGB.

Model	ZM-L120A-HR
Resolution	1600 x 1200
Inputs	BNC video 2 in and 2 out, DVI, HDMI, VGA in, audio in & out, S-Video in & out
Power	12VDC
Dimensions	19.3"W x 16.5"H x 2.5"D

ZM-CR Series

Color Flat Screen CRT Monitors

Features include NTSC or PAL compatibility, two audio inputs/outputs (RCA), on-screen adjustment display, and industrial-grade metal housing. Flat screen CRT minimizes distortion and reflection..

Models	ZM-CR315NP-US - 15" ZM-CR321NP-US - 21"
Resolution	15 - 400 TVL/ 21- 500 TVL
Inputs	2 video in and 2 video out (BNC), 2 audio in and 2 audio out (RCA)
Power	AC 100 - 240V, 50/60Hz
Dimensions	15" - 14.4"W x 13.5"H x 15.4"D 21" - 19.1"W x 17.1"H x 18.7"D

NEW



ZNR Shown with ZM-L20A-HR Monitor



Up to 6TB storage available.
DVD writer included



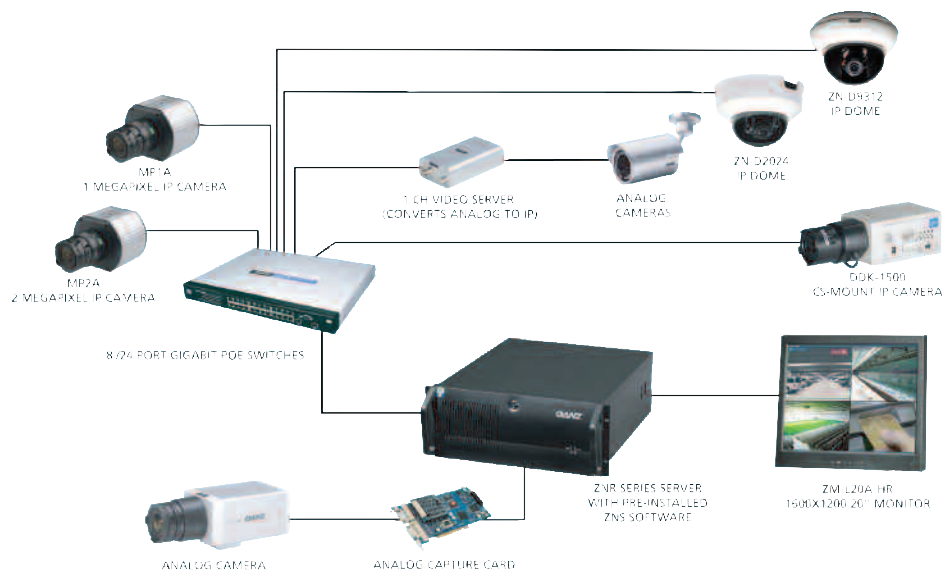
The Ganz ZNR Series NVR is an IP Video Surveillance System that integrates with all Ganz IP and Megapixel Cameras in a single 4U rackmount server. Designed for use with Ganz ZNS Series surveillance software.

- 16 and 32 Channel Hybrid NVR's
- Internal 1TB to 6TB Configurations
- Supports all Ganz® IP Products
- Supports most major IP CCTV Manufacturers
- Built in DVD Writer
- Software can be pre-installed or sold separately
- External storage & RAID option available

Models - IP/Megapixel NVR		Models - Hybrid NVR (with Video Capture Card for Analog Cameras)	
ZNR-PRO	ZNR-MASTER	ZNR-PRO HYBRID	ZNR-MASTER HYBRID
Up to 16 Channel	Up to 32 Channel	Up to 16 Channel	Up to 32 Channel
ZNRP-1TB	ZNRM-1TB	ZNRPH-1TB	ZNRMH-1TB
ZNRP-2TB	ZNRM-2TB	ZNRPH-2TB	ZNRMH-2TB
ZNRP-3TB	ZNRM-3TB	ZNRPH-3TB	ZNRMH-3TB
ZNRP-4TB	ZNRM-4TB	ZNRPH-4TB	ZNRMH-4TB
ZNRP-5TB	ZNRM-5TB	ZNRPH-5TB	ZNRMH-5TB
ZNRP-6TB	ZNRM-6TB	ZNRPH-6TB	ZNRMH-6TB

*Additional storage & RAID options available

Input Voltage	115VAC
Form Factor	4U rackmount design, 1.2mm steel construction
Front USB Ports	2 x USB
Rear USB Ports	6 x USB
Cooling System	2 x 120mm front fans, 2 x 80mm top fans
Dimensions	19" W x 7"H x 21.5" D
Operating System	Windows XP Pro
NIC	2x Gbit 1000Base T RJ-45
DVD/CD RW	Front panel access
Storage	1TB internal (up to 6)
Graphics Card	512MB PCIe x16 ATI Radeon, Dual DVI Output



CS Mount
Cameras

Speciality & IR
Cameras

Dome
Cameras

PTZ Dome
Cameras

Board
Cameras

Monitors

Network Video
Devices

Recording
Devices

Kits

Accessories

ZNS Series

IP Network Video Surveillance Software



- Custom display layouts that can be sequenced and/or saved
- Intuitive user interface requires little to no training
- Network camera search wizard finds all available network (IP) cameras
- Digital PTZ functionality on all cameras in live and recorded mode
- Comprehensive bandwidth throttling
- Permissions can be assigned at the individual, group and server levels
- Multiple clients can be connected to a single server
- Client can be connected to multiple servers
- Server can be run in Windows service mode
- Frames upload to an FTP server or to a Network Drive
- Full-featured local & remote playback with SMART Search
- Screen may be configured for wide screen monitors (WXGA)
- Web client is also available (16-channel live view)

Models	ZNS-BASIC	ZNS-PRO	ZNS-ADVANCED	ZNS-ENTERPRISE
Max Cameras	4	9	16	**unlimited
Max Remote Clients	*1	*3	*5	**unlimited

*Client software is free; limitation is for simultaneous users.
**Per Server; limitations based on hardware specs and network speed.

ZN-D9000 SERIES

Day/Night Progressive Scan IP Dome Cameras



NEW

The ZN-D9000 Series day/night network domes feature 3.3-12 **computar**® varifocal lenses providing superior image quality with progressive scan CCD. Featuring a super low-light digital or true day/night mode, real-time M-JPEG/MPEG-4 compression, 2 way audio and VGA resolution.

Indoor (flush, pendant & wall mount) and outdoor (pendant & wall mount) options available.

Model	ZN-D9312NHA - Digital D/N ZN-DN9312NHA - True D/N
Video Standard	M-JPEG/MPEG-4
Resolution	640 (H) x 480 (V)
Power	24VAC/12VDC or PoE UL Listed
Dimensions	5.6" Ø x 4.3"H
Accessories	ZCOH5-IP - Vandal-proof Outdoor IP Housing

Additional lens options coming soon!

DDK-1500D

Dual-Codec Outdoor Day/Night IP Dome Camera



NEW

The DDK-1500D IP dome features a 3.7-12mm varifocal lens and provides 530 TVL with Sony Super HAD CCD. This vandal proof, IP66 rated dome features a mechanical IR cut filter, day/night function, built-in IR illumination and Dual-codec M-JPEG/MPEG-4 compression.

Model	DDK-1500D
Video Standard	M-JPEG/MPEG-4 Selectable
Resolution	530 TVL
Lens	3.7-12mm Varifocal AI, DC
Power	12VDC or PoE
Dimensions	5.6" Ø x 4.3"H

MP-DN Series

1.3, 2, 3 and 5 Megapixel Day/Night IP H.264 Cameras

NEW



The MP-DN Series features fully compliant H.264 technology, offering compression rates up to 25x greater than conventional megapixel cameras and delivering HD resolution up to 25x greater than analog surveillance cameras. This series provides HD image quality, functionality and bandwidth optimization all at an extremely competitive price.

Available in iPak - preinstalled outdoor IP kits with power & Ethernet cables (pg.19).

Models	MP1DN MP2DN MP3DN MP5DN	1.3 MP 2 MP 3 MP 5 MP
Video Standard	H.264/M-JPEG	
Resolution	MP1DN MP2DN MP3DN MP5DN	1280 x 1024 1600 x 1200 2048 x 1536 2592 x 1944
Power	12-48 VDC or PoE	
Dimensions	2.5"W x 2.8"H x 2.3"D	

MP Series

1.3, 2 and 5 Megapixel IP Cameras



The MP1A, MP2A and MP5A are IP addressable 1.3, 2 and 5 megapixel color cameras delivering high definition full motion video at a maximum rate of up to 30 frames per second. Cameras have viewing and recording software with the ability to zoom after the event from high resolution digital archives, providing up to 25x the resolution of analog cameras. Compatible with several **computer**® Megapixel lenses (see page 21).

Models	MP1A MP2A MP5A	1.3 MP 2 MP 5 MP
Video Standard	M-JPEG	
Resolution	MP1A MP2A MP5A	1280 x 1024 1600 x 1200 2592 x 1944
Power	12-48 VDC or PoE	
Dimensions	3"W x 2.5"H x 2.3"D	

Available in iPak - preinstalled outdoor IP kits with power & Ethernet cables (see pg.19).

MP8 Series

8 Megapixel Panoramic IP Domes



The MP8D-L4 and MP8P deliver panoramic views and cinema compatible frame rates to allow real time high definition digital video surveillance. The 180° and 360° fields of view are achieved by using four separate 2 Megapixel CMOS sensors viewed as a quad image on one screen. Each dome comes standard with four 4mm lenses.

Models	MP8-L4 MP8P
Video Standard	M-JPEG
Resolution	22 FPS @ 1600 x 1200
Power	9-12VDC or PoE
Dimensions	7.2"Ø x 6.1"

Outdoor pendant and wall mount options available.

Recording Software Included. All MP-DN and MP Series Cameras include flexible surveillance software supporting real-time multi camera viewing, motion detection, digital archiving and automatic identification and configuration of all installed cameras via graphical user interface.

CS Mount
Cameras

Specialty & IR
Cameras

Dome
Cameras

PTZ Dome
Cameras

Board
Cameras

Monitors

Network Video
Devices

Recording
Devices

Accessories
& Kits

Lenses

DDK-1500

Dual-Codec True Day/Night IP Camera



The DDK-1500 is an advanced day/night IP camera for professional IP surveillance applications. This camera displays 520 TV lines and delivers MPEG-4/M-JPEG video compression for crisp high resolution images. Its user-friendly features include SD Card slot for on-board recording, analog video output, PoE compatibility, and auto iris input.

Model	DDK-1500
Video Standard	MPEG-4/M-JPEG
Resolution	520 TVL
Power	12VDC/6 W or PoE
Dimensions	2.4" W x 1.8" H x 3.7" D

Available in iPak - preinstalled outdoor IP kits with power & Ethernet cables (pg.19)

ZN-D2024

Indoor IP Network Dome Camera



The ZN-D2024 network dome camera with varifocal lens is ideal for indoor residential or commercial use. It has a 3-axis lens adjustment mechanism for wall or ceiling mount applications. The IP dome features real-time MPEG-4 and M-JPEG compression, 2 way audio and VGA resolution.

Model	ZN-D2024
Video Standard	MPEG-4/M-JPEG
Resolution	640 (H) x 480 (V)
Power	12VDC or PoE
Dimensions	5.8" Ø x 5" H

ZN-YH305

Hi-Res Color IP Camera



The ZN-YH305 is a full-functional network camera equipped with a 1/4" CMOS sensor. This hi-res camera provides VGA resolution using real-time MPEG-4 compression, has PoE built-in and digital I/O for external sensor and alarm.

Model	ZN-YH305
Video Standard	MPEG-4
Resolution	640 (H) x 480 (V)
Power	12VDC or PoE
Dimensions	3.7" W x 1.9" H x 5.7" D

Available in iPak - preinstalled outdoor IP kits with power & Ethernet cables (pg.19)

ZV-S306

MPEG-4/M-JPEG Video Server



The ZV-S306 is a one channel video server using microchip technology to provide high quality real-time video compression in MPEG-4 and M-JPEG formats. Video streams can be activated simultaneously to address multiple requirements for live viewing and recording.

Model	ZV-S306
Video Standard	MPEG-4/M-JPEG
Resolution	Up to D1 [720(H) x 480 (V)]
Power	12VDC
Dimensions	4.8" W x 1.2" H x 3" D

DIGIMASTER SERIES

4, 8 and 16-Channel Digital Video Recorders

Recording
Devices

DIGIMASTER 120 IPS



Up to 3.0 TB
Internal Storage



Includes Handheld Remote
& Thumb Drive



DR16N is compatible with the
ZCA-SC201 PTZ Dome/DVR
Controller

- 4/8/16 ch video and 4 ch audio recording
- 120 images per second recording speed
- True TRIPLEX operation
- Up to 704 x 480 (4 CIF/D1) resolution
- Optimized MPEG-4 compression
- 10/100 Base T Network Connection allows remote viewing, playback and PTZ control
- Mouse control through USB port
- USB-2 port for quick downloading to a thumb drive
- Internal DVD drive for data backup (optional)
- PTZ control (drivers for most popular models included)
- Panic button recording mode with adjustable settings per channel
- Hard disk drives engineered for Digital Video Surveillance optimize performance and improve reliability

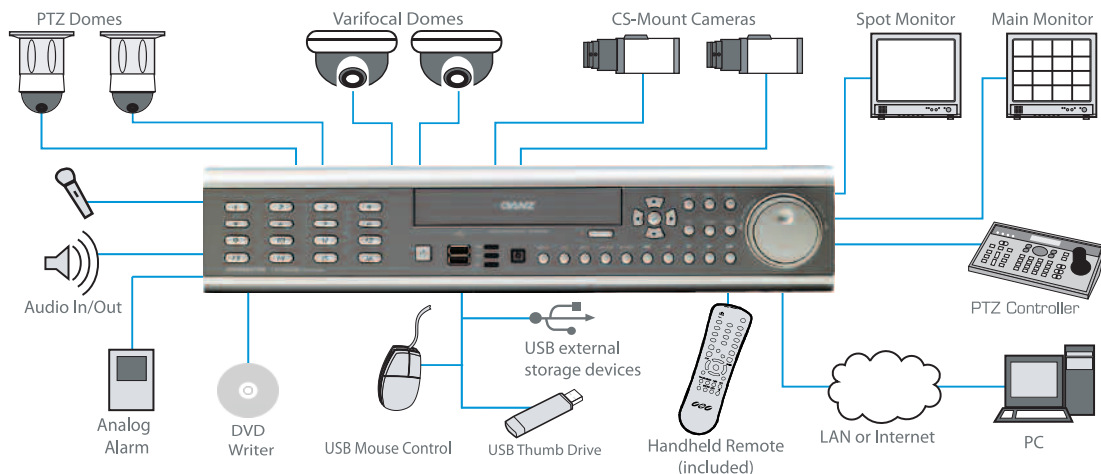
Models

4 Channel DVR		8 Channel DVR		16 Channel DVR	
DR4N*	w/no hard drive	DR8N*	w/no hard drive	DR16N*	w/no hard drive
DR4N-250*	250 GB HDD	DR8N-250*	250 GB HDD	DR16N-250*	250 GB HDD
DR4N-500*	500 GB HDD	DR8N-500*	500 GB HDD	DR16N-500*	500 GB HDD
DR4N-750*	750 GB HDD	DR8N-750*	750 GB HDD	DR16N-750*	750 GB HDD
DR4N-1TB*	1 TB HDD	DR8N-1TB*	1 TB HDD	DR16N-1TB*	1 TB HDD
DR4N-1.5TB*	1.5 TB HDD	DR8N-1.5TB*	1.5 TB HDD	DR16N-1.5TB*	1.5 TB HDD
		DR8N-2.25TB*	2.25 TB HDD	DR16N-2TB*	2 TB HDD
				DR16N-2.25TB*	2.25 TB HDD
				DR16N-3TB	3 TB HDD

*Add suffix "D" for DVD writer option (e.g.: DR16ND-250)

Optional Accessories

DR4-RM1A	Optional 19" rack mount kit for 4-channel models
DR-RM2	Optional 19" rack mount kit for 8 and 16-channel models
ZCA-SC201	PTZ Dome Controller (for DR16N)



CS Mount
Cameras

Speciality & IR
Cameras

Dome
Cameras

PTZ Dome
Cameras

Board
Cameras

Monitors

Network Video
Devices

Recording
Devices

Accessories
& Kits

Lenses

DIGIMASTER-RT**480 IPS**
REAL TIME**Up to 3.0 TB
Internal Storage**

DIGIMASTER-RT Series

16 Channel 480 IPS Real-Time DVR

- 480 IPS Real-Time 16-Channel DVR
- USB Mouse & Keyboard Control
- High Image Quality - XVGA Live Display
- Efficient MPEG-4 Compression
- 4 Spot Outputs with Quad Display
- Advanced SMART & Panorama Search
- Archive to DVD or Thumb Drive
- Remote Viewing & Playback with PTZ Control
- Panic button recording mode with adjustable settings per channel
- Hard disk drives engineered for Digital Video Surveillance optimize performance and improve reliability

Specifications

Video Input:	16 inputs, 1Vp-p, 75 ohms, BNC
Audio	4x line -in, RCA
HDD	Up to 3 TB
Record Speed	480 Images/sec.
Resolution	704 x 480 (4CIF/D1)
Power	100VAC-240VAC, 60/50Hz
Dimensions	16.9" x 3.5" x 18.1"

Models

DR16NRT	w/no hard drive
DR16NRT-250	250 GB HDD
DR16NRT-500	500 GB HDD
DR16NRT-750	750 GB HDD
DR16NRT-1TB	1 TB HDD
DR16NRT-2TB	2 TB HDD
DR16NRT-3TB	3 TB HDD
DR-RM2	Optional 19" rack mount kit

CTR-030NC-2/CTR024N-2

30-960 Real-Time & 24-Hour Timelapse VCRs

- Jog shuttle for quick search
- Time/date display
- Programmable recording modes including - alarm, series, repeat and timer recording
- Records up to 960 hours (time Lapse) in Timelapse mode or 30 hours real-time mode with T-120 tape
- Playback functions including - search, slow-motion, frame-by-frame, forward wind and freeze frame

Models

CTR-030NC-2	
Record Time	Up to 960 hours (T-120 tape)
Modes	Real-Time - 6, 18, 30 hours
Timelapse	up to 960 hours
CTR-024N-2	
Record Time	Up to 24 hours (T-120 tape)
Modes	2, 12, 24 hours
CTR-024N-2 & CTR-030NC-2	
Resolution	B/W - 350 lines (2H) / Color - 300 lines (2H)
Power	AC 100 - 240V, 50/60Hz
Dimensions	14.2"(W) x 3.7"(H) x 10.6"(D)



DIGIMAX SERIES

16-Channel PC Based Digital Recorders

Recording
Devices

DIGIMAX

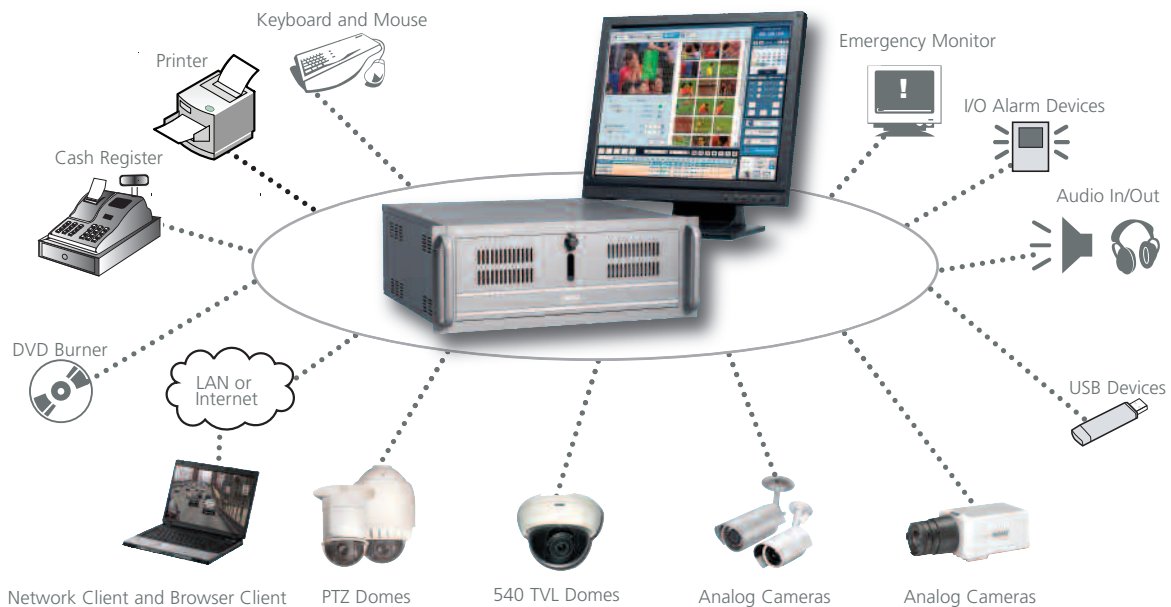


The DIGIMAX Series are PC-based Digital Video Recorders designed to provide state-of-the-art features, exceptional recorded image quality, and ease of operation. The system is powered by the Embedded Windows XP operating system. With up to 2.5 TB of internal storage capacity, this DVR series provides up to 60 days of recording time, even at 704 x 480 (4CIF) resolution. USB-2 ports and an internal DVD burner provide multiple methods to perform quick and easy archiving of video data.

- Embedded Windows XP® Operating System
- MPEG-4 compression, for high quality recording with reduced HDD consumption
- 480 images per second global recording rate
- Recording Resolutions of 704 x 480 (4 CIF), 704 x 240 (2 CIF), and 352 x 240 (CIF)
- Up to 16 channels of Audio Recording
- Multiple Display Outputs
- Connectivity with Keyboard and POS Devices
- Remote Control via GANZ® Management Software (GMS)

Models

ZR-DHC1630NP	250 GB HDD	16 channel
ZR-DHC1630NP-750	750 GB HDD	16 channel
ZR-DHC1630NP-1.25TB	1.25 TB HDD	16 channel
ZR-DHC1630NP-1.75TB	1.75 TB HDD	16 channel
ZR-DHC1630NP-2.25TB	2.25 TB HDD	16 channel
ZR-DHC1630NP-2.5TB	2.5 TB HDD	16 channel



CS Mount
Cameras

Speciality & IR
Cameras

Dome
Cameras

PTZ Dome
Cameras

Board
Cameras

Monitors

Network Video
Devices

Recording
Devices

Accessories
& Kits

Lenses

PRO-PAK HOUSINGS & CAMERA KITS

Preassembled Outdoor Camera Kits with Power & Video Cables

CS Mount
CamerasSpecialty & IR
CamerasDome
CamerasPTZ Dome
CamerasBoard
Cameras

Monitors

Network Video
DevicesRecording
DevicesAccessories
& Kits

Lenses



HWB-1 & HWB-2 Pro-Pak with
Optional Sunshield



HWB-3 accommodates Camera/Lens
Combinations up to 9" Long



Shown with IR Illuminator.
(Requires Mounting Bracket)



Open Housing Shows Camera & Lens

Pro-Pak Kits include housing, wall or ceiling bracket with pre-assembled GANZ® camera and **computar**® varifocal lens. Pro-Pak kits can be ordered with a variety of B/W, Color or Day/Night cameras with manual or auto-iris varifocal lenses. All lenses are backfocused and five feet of outdoor rated power and video cable are included.

HWB-1 & HWB-2

Outdoor Housing with Wall Brackets

Compact, attractive design for indoor or outdoor use. Slide-off cover provides full accessibility to camera. Optional sunshield (SS-1), ceiling bracket (JB-1), and pole mount adapter (PMA1). HWB-2 includes heater.

Models	HWB-1 Pro-Pak housing HWB-2 Pro-Pak housing with heater
Dimensions	3.8" Ø x 10.9" L
Max camera/lens size	2.7" W x 2.1" H x 7.8" L
Construction	Aluminum housing & mount; polycarbonate end-caps; all stainless-steel hardware

HWB-3

Large Outdoor Housing with Heater/Blower

A larger version of our HWB-1 and HWB-2 provides extra room for larger cameras and includes a heater/blower for extreme weather environments. Includes wall bracket.

Model	HWB-3 Larger Pro-Pak housing with heater
Dimensions	4.3" Ø x 16.5" L
Max camera/lens size	2.8" W x 2.8" H x 9.0" L
Construction	Aluminum housing & mount; polycarbonate end-caps; all stainless-steel hardware

Pro-Pak Camera & Lens Options

Pro-Pak Day/Night Camera Options

YCH03A
Digital Day/Night



ZC-NH405N
True Day/Night



ZC-NH258N
True Day/Night



Pro-Pak Standard Camera Options

FC-62D/FCH-62
380 TVL/570 TVL B/W



YC-02C
330 TVL Color



Manual and Auto Iris Lens Options



2.9-8.2mm
1/3" CS-MT
F1.0, IR



2.8-12mm
1/3" CS-MT
F1.3, IR



3.5-10.5mm
1/3" CS-MT
F1.0



8.5-40mm
1/3" CS-MT
F1.3, IR



5-50mm
1/3" CS-MT
F1.3

IPAK HOUSINGS & CAMERA KITS

Preassembled Outdoor IP Kits with Power & Ethernet Cables

KITS

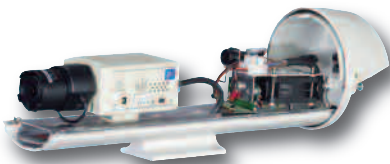
NEW



iPak Housing with Power & Ethernet Cables

iPak Kits include housing, wall or ceiling bracket with pre-assembled GANZ® camera and **computar**® lens. iPak kits can be ordered with a variety of cameras and lens combinations (see below). Five feet of prewired outdoor rated power and Ethernet cables are included.

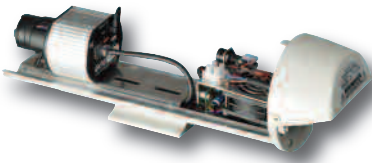
- Pre-assembled kit with 24VAC heater and blower
- Pre-wired power & ethernet cables included
- Feed-through mounting bracket conceals cables
- Minimal set-up reduces installation time
- 24VAC power input
- Multiple mounting options available
- Slide-off cover for full accessibility
- Rugged aluminum housing suitable for all weather conditions



iPak inside view with DDK-1500 Camera & IR Varifocal Lens

iPak Housing with Dual-Codec True Day/Night IP Camera & IR Lens

Models	HWB3-281A16 HWB3-84A16	2.8-12mm IR lens 8.5-40mm IR lens
Dimensions	4.3" Ø x 16.5" L	
Max camera/lens size	2.8" W x 2.8" H x 9.0" L	
Construction	Aluminum housing & mount; polycarbonate end-caps; all stainless-steel hardware	



iPak inside view with MP2A Camera & Megapixel Lens

iPak Housing with 2 Megapixel Camera & Megapixel Lens

Models	HWB3-48AMP2 HWB3-25MP2 HWB3-50MP2	4-8mm MP lens 25mm MP lens 50mm MP lens
Dimensions	4.3" Ø x 16.5" L	
Max camera/lens size	2.8" W x 2.8" H x 9.0" L	
Construction	Aluminum housing & mount; polycarbonate end-caps; all stainless-steel hardware	

iPak Camera & Lens Options

iPak Housing with Dual-Codec True Day/Night IP Camera & IR Lens Options



DDK-1500
True Day Night
1/3" CS-MT



TG4Z2813FCS-IR
2.8-12mm IR
1/3" CS-MT F1.3



TG5Z8513FCS-IR
8.5-40mm IR
1/3" CS-MT F1.3



Additional iPak camera/lens combinations available. Contact customer service for more information.

iPak Housing with 2 Megapixel Camera & Megapixel Lens Options



MP2A
2 Megapixel
1/2" CMOS C-MT



HG2Z0414FC-MP
4-8mm Megapixel DC A/I
1/2" C-MT F1.4



M2514-MP
25mm Megapixel
2/3" C-MT F1.4



M5018-MP
50mm Megapixel
2/3" C-MT F1.8

CS Mount
Cameras

Specialty & IR
Cameras

Dome
Cameras

PTZ Dome
Cameras

Board
Cameras

Monitors

Network Video
Devices

Recording
Devices

Accessories
& Kits

Lenses



ACCESSORIES

Power, Mounting and Viewing Accessories

ZM-L304N

Portable 4" Color Service Monitor



This hi-res LCD (TFT-type LCD) portable, battery-powered monitor displays video signals from the camera. It can be used to adjust zoom and focus settings and check camera operation on location. Equipped with a video loop-through terminal, the image

input from the camera can be viewed simultaneously on an external monitor. Case with sunshield and stand included.

Model	ZM-L304N
Resolution	480 x 234
Inputs	Video IN terminal (VIDEO) BNC/Video through terminal (THROUGH)
Power	9VDC; six AA Alkaline Batteries AC adapter included
Dimensions	5"W x 3.8"H x 1.4"D

CBF-1

Camera Back Focusing Neutral Density Filter



The CBF-1 Neutral Density Filter is used primarily to make the proper back focus adjustments when installing motorized zoom lenses. To assure that a zoom lens stays in focus throughout the zoom range, the camera must be backfocused when lens iris is wide open. The

CBF-1 is placed in front of the lens to keep the auto-iris open during adjustment. The filter is 4" x 4" square and made of glass - not plastic - and has an ND rating of 3.0. The CBF-1 filter is an essential tool for the professional installer. Protective case included.

VM300

View Finder/Lens Selector



A valuable tool for both the seasoned professional and first-time installer. The viewfinder is an optical tool to help determine the required focal length. First look through the eyepiece and zoom in to the desired image. Then read the required focal length on the lens barrel. Covers

2/3", 1/2", 1/3", and 1/4" formats. A protective case and neck strap are included.

CMB Series

Camera Mounting Brackets



Camera mounting brackets available in 6" or 4" sizes in your choice of black or off-white. Aluminum construction with removable shaft and T-bar ceiling clip.

Models	
CMB-1	6" Bracket, Black
CMB-2	6" Bracket, White
CMB-3	4" Bracket, Black
CMB-4	4" Bracket, White

PS Series

Multiple 24 VAC Indoor Master Power Supplies



24VAC, UL-listed, 4, 8 and 16-output power supplies. 115VAC 50/60Hz, 1.8-amp. For indoor use only.

Models	
PS-411A	4 Output, 100vA
PS-811A	8 Output, 100vA
PS-821A	8 Output, 175vA
PS-1621A	16 Output, 200vA

Single Power Supplies

12VDC & 24VAC Power Supplies



Three models offer solutions to meet different installation requirements. The C12DCR-500 provides 12 volts DC regulated 500 milliamps output; the C24AC provides 24 volts AC 20vA output; and the C24AC-40 provides 24 volts AC 40vA. The power

supplies are UL-listed and plug into any 120 VAC duplex wall receptacle. For indoor use only.

Varifocal Lenses



computar® Varifocal lenses are the ideal solution for almost all installations. They are easy to adjust and install, requiring little or no training. The lenses offer three different options of iris control: manual iris (typically for indoor applications), auto iris DC drive and auto iris video drive (typically for external applications). **computar®** Aspherical IR varifocal lenses, commonly known as Day/Night lenses, are the ideal solution for low light and/or where infra-red illumination is used. These lenses are suitable for all Day/Night, color and monochrome cameras including high and super high resolution. All **computar®** Varifocal lenses offer the maximum flexibility as they can be adjusted to match the exact scene required by the end user. Once obtained, the view can be fixed by using the lens locking screws. **computar®** offers one of the largest ranges of Varifocal lenses from 1.8mm (almost fish eye) to 50mm for close up views.

Focal Length	Manual Iris	DC Auto Iris	Video Auto Iris	IR Version	F Stop	Angle of View (HOR)	Format	Mount
1.8-3.6mm	T2Z1816CS	TG2Z1816FCS	TG2Z1816AFCS	-	1.6	144.2° ~ 79.4°	1/3"	CS
2.8-12mm	T4Z2813CS-IR	TG4Z2813FCS-IR	TG4Z2813AFCS-IR	Standard	1.3*	102.2° ~ 23.7°	1/3"	CS
2.9-8.2mm	T3Z2910CS	TG3Z2910FCS	TG3Z2910AFCS	Available	1.0**	98.3° ~ 35.2°	1/3"	CS
3.5-10.5mm	T3Z3510CS	TG3Z3510FCS	TG3Z3510AFCS	Available	1.0**	81.6° ~ 27.2°	1/3"	CS
4.5-12.5mm	H3Z4512CS-IR	HG3Z4512FCS-IR	HG3Z4512AFCS-IR	Standard	1.2*	83.7° ~ 30.1°	1/2"	CS
10-30mm	H3Z1014CS	HG3Z1014FCS	HG3Z1014AFCS	-	1.4	35.8° ~ 12.5°	1/2"	CS
8.5-40mm	T5Z8513CS-IR	TG5Z8513FCS-IR	TG5Z8513AFCS-IR	Standard	1.3*	33.5° ~ 7.1°	1/3"	CS
5-50mm	T10Z0513CS	TG10Z0513FCS	TG10Z0513AFCS	-	1.3*	51.8° ~ 5.6°	1/3"	CS

Megapixel Varifocal Lenses

*Aspherical lens - improves the image quality
**Large aperture - transmits more light

Focal Length	Manual Iris	DC Auto Iris	IR Version	F Stop	Angle of View (HOR)	Format	Mount
2.8-12mm	-	TG4Z2813FCS-MPIR	Standard	1.3	102.2° ~ 23.7°	1/3"	CS
4-8mm	H2Z0414C-MP	HG2Z0414FC-MP	-	1.4	90.4° ~ 47.0°	1/2"	C
12-36mm	M3Z1228C-MP	-	-	2.8	41.0° ~ 13.6°	2/3"	C

Megapixel Lenses



computar® Megapixel lenses are designed to capture the higher resolution of Megapixel and super high resolution cameras, providing a high contrast and sharp picture. The wide aperture (F1.4) design of the Megapixel lenses helps to achieve clear images under low light levels. These lenses also provide excellent image recognition accuracy by reducing distortion and improving illumination uniformity over the camera sensor. Another important feature is the robust enclosure that is resistant to vibrations and shocks, making it ideal for use in video imaging equipment and machine vision applications.

Focal Length	Model	F Stop	Angle of View (HOR)	Format	Mount
5mm	H0514-MP	1.4	65.5°	1/2"	C
8mm	M0814-MP	1.4	56.3°	2/3"	C
12mm	M1214-MP	1.4	40.4°	2/3"	C
16mm	M1614-MP	1.4	30.8°	2/3"	C
25mm	M2514-MP	1.4	20.0°	2/3"	C
35mm	M3514-MP	1.4	13.9°	2/3"	C
50mm	M5018-MP	1.8	10.5°	2/3"	C
75mm	M7528-MP	2.8	6.8°	2/3"	C

Megapixel Varifocal Lenses

Focal Length	Manual Iris	DC Auto Iris	IR Version	F Stop	Angle of View (HOR)	Format	Mount
2.8-12mm	-	TG4Z2813FCS-MPIR	Standard	1.3	102.2° ~ 23.7°	1/3"	CS
4-8mm	H2Z0414C-MP	HG2Z0414FC-MP	-	1.4	90.4° ~ 47.0°	1/2"	C
12-36mm	M3Z1228C-MP	-	-	2.8	41.0° ~ 13.6°	2/3"	C

For a complete listing of **computar®** lenses - request our lens catalog or view online at www.computarganz.com.



CBC (AMERICA) Corp

55 Mall Drive, Commack, NY 11725

Tel: 800 422-6707 Fax: 631 543-5426

20521 Earl Street, Torrance, CA 90503

Tel: 800 888-0131 Fax: 310 793-1506

www.computarganz.com

CBC (AMERICA) Corp. views the protection of the environment as both a moral obligation and as a business imperative.
We proudly state that this catalog is printed with soy-based ink products, on paper that is Forest Stewardship Council (FSC) certified.

*CBC reserves the right to modify product specifications without prior notice and assumes no responsibility for errors in this publication.
All products mentioned in this publication are acknowledged to be the property of their respective trademark owners.*